

Products: LEP400/LEP402/LEP403

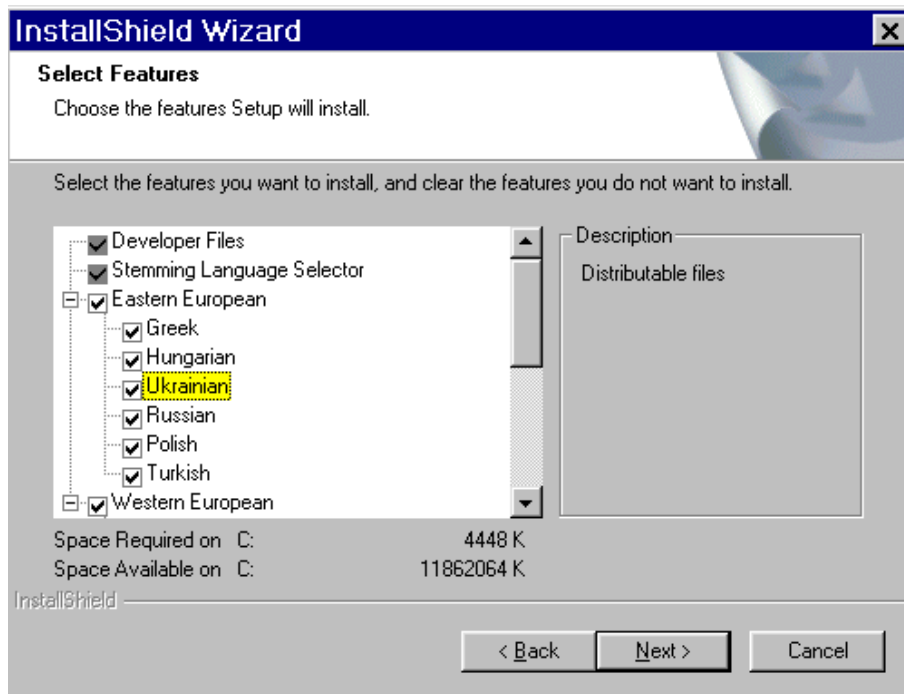
Installation From CD:

1. Insert the Language Extension Pack CD into your CD drive and follow the instructions to complete the installation. If your system does not have the AutoPlay feature you should click on Window's Start menu and select Settings|Control Panel|Add/Remove Programs. Follow the instructions that appear on screen.
2. There are two installation types.

Complete will install all the support and re-distributable files on your system. If you are installing on your development workstation you should choose this option. The default install folder is to c:\Program Files\dtSearch Developer\Language - if you require another install path choose Custom Install.

Custom will give you full control over the install path and which files to install and is useful if you want to install one or two language files on an Intranet server running dtSearch Web for example. The two types of re-distributable file are noise word files and stemming rule files.

If you are not creating your own installer software to redistribute the language files with your application (e.g. you are installing to an Intranet or Internet web server) you can use the LEP CD to do a Custom install of the selected language files into the required folder.



After the installation is complete you will find the LEP Developer documentation on the Window's Start menu under Programs|dtSearch Developer|Tools. The redistributable files will be installed by default in your ..\Program Files\dtSearch Developer\Language folder.

Electronart Design Ltd
126 Cranbrook Road (First Floor Suite)
Ilford IG1 4LZ
sales@dtsearch.co.uk
Tel: 020 8554 8660 Fax: 020 8554 0665